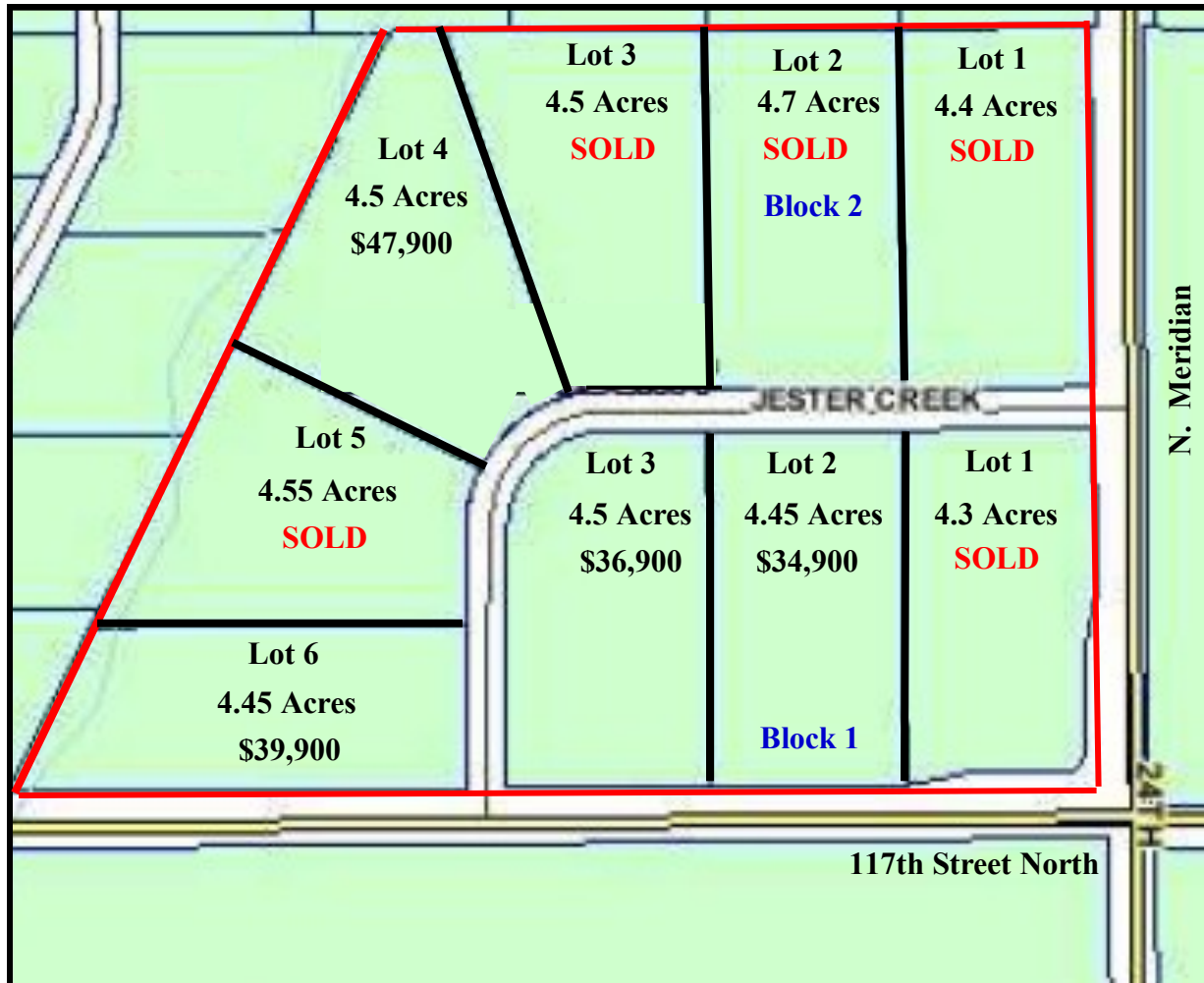


# Jester Creek Estates

Four plus acres home sites  
Priced between \$27,900 & \$47,900



Jester Creek Estates is a low density, **SCENIC** rural subdivision located just a few minutes north of Valley Center at 117th & Meridian which is blacktop. Each lot along Jester Creek Road is ready to build on with **NO SPECIALS!** Sedgwick Schools are nearby and the principal would love to provide you a personal tour of their facilities. Come build your **COUNTRY DREAM HOME** at **JESTER CREEK**, conveniently located just a few miles from all the development along the I-135 corridor at Park City, Newton, Valley Center and Wichita.

**OPEN BUILDER PROGRAM!** ACC and Covenants in place. Current square foot minimum is 1500. Each lot will require either a lagoon (Lots 1-3 in Block 1 & Lot 1 in Block 2) or a septic (lots 4,5,6 Block 2-which backup to the floodway reserve), private water well, culvert and underground Westar Electric. Call Colin for all the details.

**For more information go to  
[www.jefflangere.com](http://www.jefflangere.com)  
and click on Developments**



1-800-525-8160

Call Colin Busey for the details  
316-312-2156 316-440-5819